

Case Study: **KELVIN HALL REDEVELOPMENT**

Brief Description

Quest were contracted by IFT to be part of the team working on a major refurbishment of the Kelvin Hall project in Glasgow.

IFT installed the screeding and resin flooring to the first phase of the refurbishment of which there was 1,600sqm of Mondeco Mirrazzo over 3 floor levels to the main Atrium, circulation corridors together with approximately 80 linear metres of wall upstands (400mm high) and 550 linear metres of stair treads and risers.

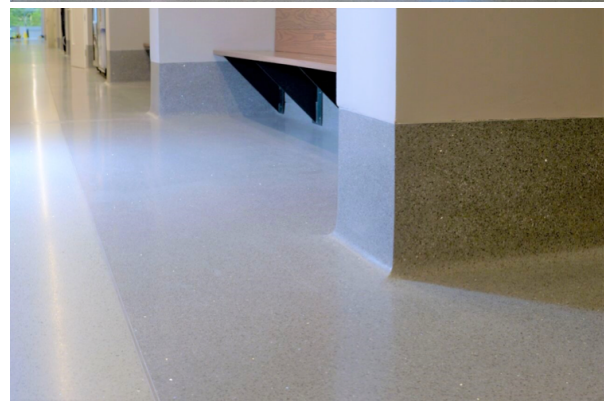
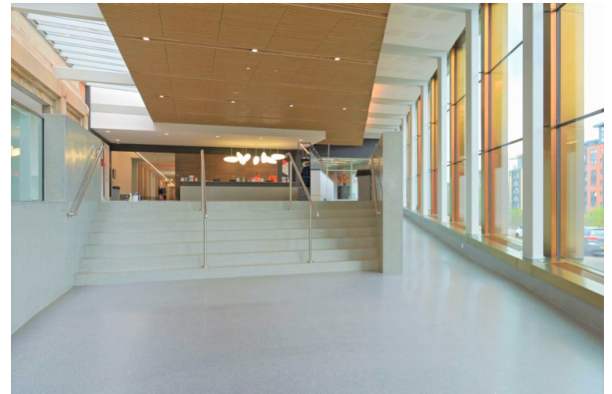
Quest's expertise was required to grind, polish and seal the Mondeco Mirrazzo finish.

Overview

On the larger floor areas Quest used 415v HTC floor grinders connected to HTC 415v vacuum dust control system providing a dust free operation. The remotely controlled machinery was used to grind and polish the newly installed flooring. On the stairways smaller HTC machines were used along with hand-grinders to achieve the perfect finish in the more tricky areas.

The Mondeco Mirrazzo finish was undertaken through a 6-stage grinding and polishing process using HTC diamond grinding and polishing pads. The final part of the process was to finish the floor with 1N° coat of a polyurethane seal and 3N° coats of Enhance seal; which was then burnished to give a high gloss finish as per the manufacturers recommended specification.

Continued..



Quest Industrial Flooring Limited - Specialist Flooring Contractor





Quest Industrial Flooring Ltd
Unit H2, Taylor Business Park
Risley, Warrington, Cheshire
WA3 6BL

This was a large-scale project that provided many challenges over a 6-month period. Ultimately, Quest provided a highly professional and specific service to meet the criteria for this historic public building.



If you wish to find out more about what quality Flooring can bring to your project, go to our website (www.questltd.co.uk), call us at 01925 737 369 or email sales@questltd.co.uk for more information!

Quest Industrial Flooring Limited - Specialist Flooring Contractor



Quest Industrial Flooring Ltd, Unit H2, Taylor Business Park, Risley, Warrington, Cheshire. WA3 6BL - © Quest Industrial Flooring Ltd 2017

Tel: 01925 737 369 • Email: sales@questltd.co.uk