



Quest Industrial Flooring Ltd
Unit H2, Taylor Business Park
Risley, Warrington, Cheshire
WA3 6BL

Case Study: Co-op, Lea Green, St. Helens

Brief Description

HB Projects contracted Quest to replace the walkway line markings in a large Co-op warehousing facility. This entailed removing the old-line markings and preparing the concrete substrate before re-applying the new line demarcations.

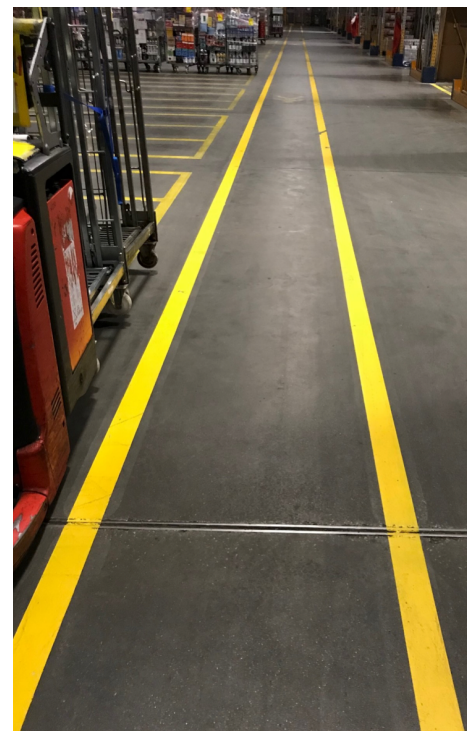
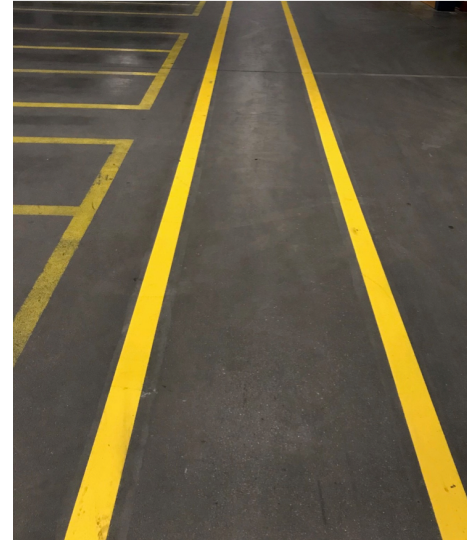
Overview

Quest began removing the old markings by mechanically preparing the concrete substrate using a diamond grinder connected to vacuum dust control system to ensure that any traces of the old markings were completely removed, and the environment was dust free throughout the process.

Once this first stage was complete Quest began applying the new line demarcations. These were accurately applied using a Polyline safety yellow line marker paint which was roller applied @100mm to approx.220 linear metres. This process was carried out in stages due to the busy environment and each area was cordoned off with barriers whilst the paint was applied and left to cure.

It was important that the job was carried out quickly and efficiently and that there was little disruption to this live working environment. Quest's involvement commenced on 2nd November 2017 and the project was completed within a 4-day window. The customer was very happy with end results and Mike Craine from HB Projects said that they will be using Quest in the future.

If you wish to find out more about what quality Flooring can bring to your project, go to our website (www.questltd.co.uk), call us at 01925 737 369 or email sales@questltd.co.uk for more information!



Quest Industrial Flooring Limited - Specialist Flooring Contractor



Quest Industrial Flooring Ltd, Unit H2, Taylor Business Park, Risley, Warrington, Cheshire. WA3 6BL - © Quest Industrial Flooring Ltd 2017

Tel: 01925 737 369 • Email: sales@questltd.co.uk